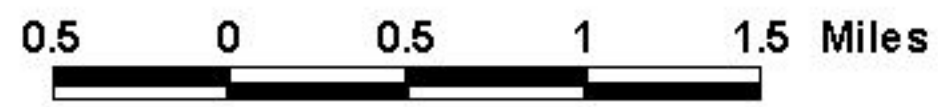
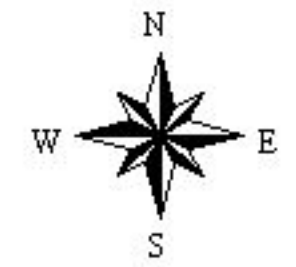
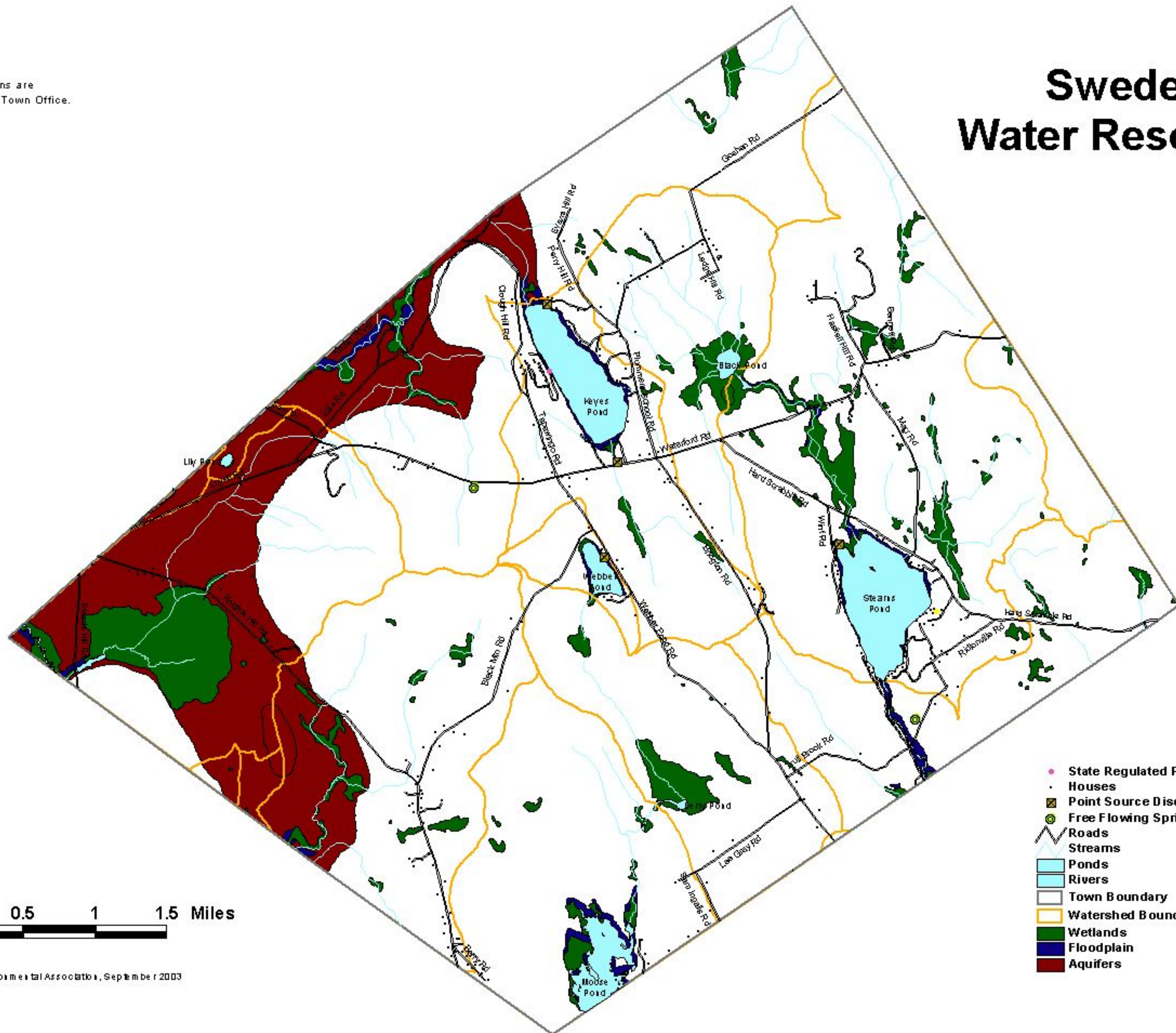


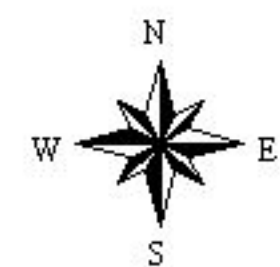
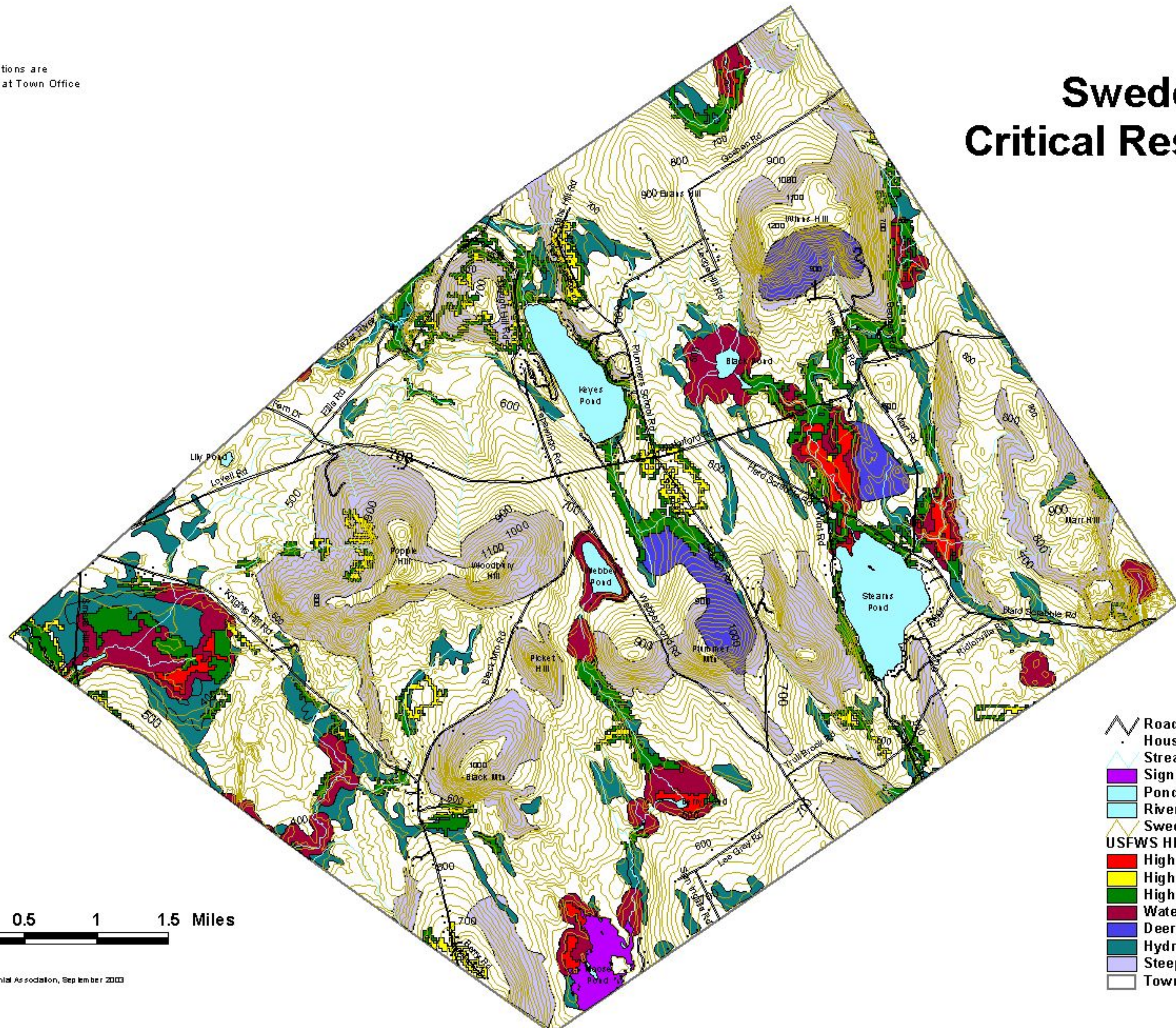
Sweden Water Resources

Boundaries and locations are approximate. Verify at Town Office.



Boundaries and locations are approximate. Verify at Town Office

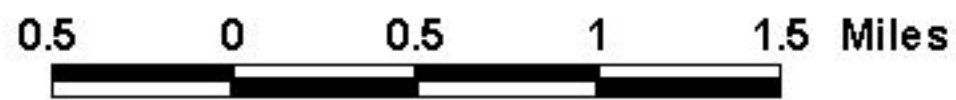
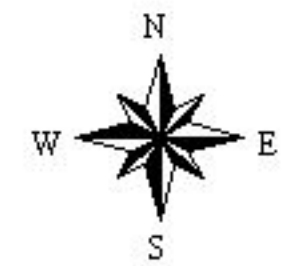
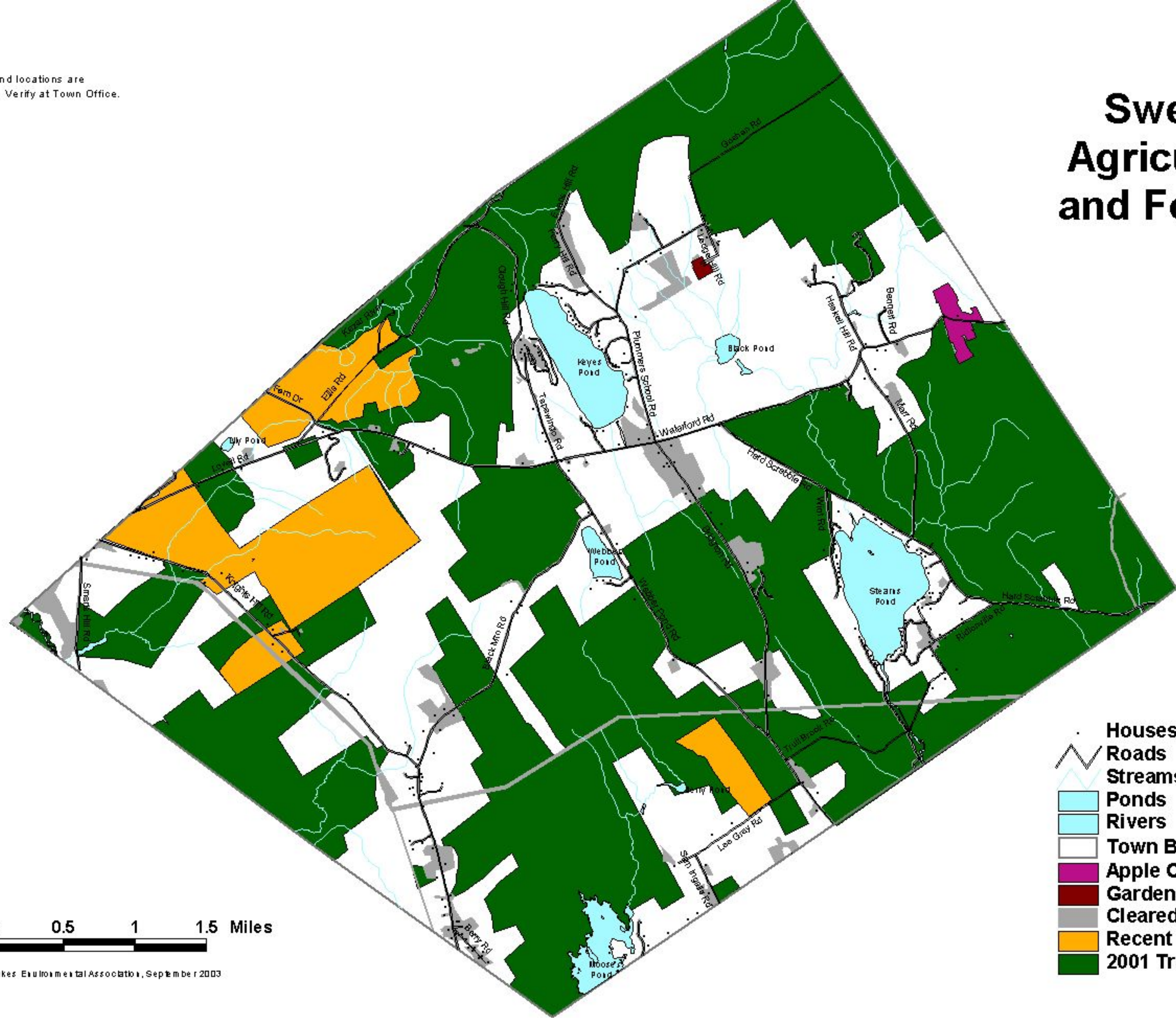
Sweden Critical Resources



- Roads
- Houses
- Streams
- Significant Fisheries
- Ponds
- Rivers
- Sweden Contours (20 foot intervals)
- USFWS HIGH VALUE HABITAT**
- High Value Freshwater Wetland Habitat
- High Value Grassland Habitat
- High Value Upland Forest Habitat
- Waterfowl and Wading Bird Habitat
- Deer Wintering Areas
- Hydric and Partially Hydric Soils
- Steep Slopes
- Town Boundary

Boundaries and locations are approximate. Verify at Town Office.

Sweden Agriculture and Forestry



Prepared by: Lakes Environmental Association, September 2003

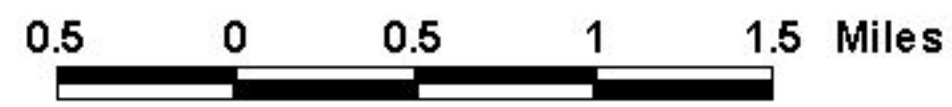
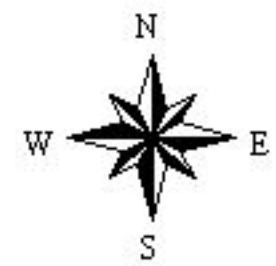
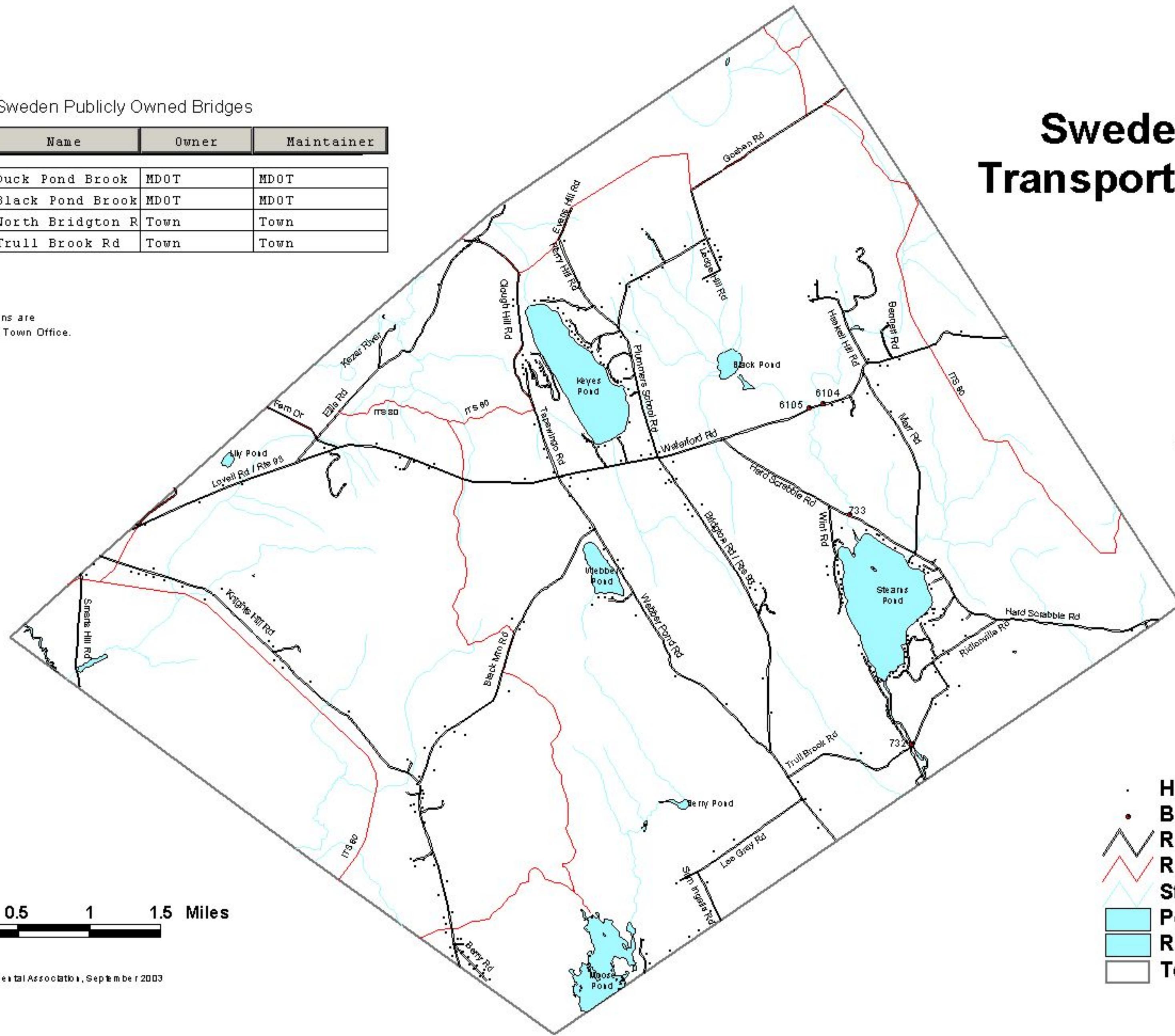
- Houses
- Roads
- Streams
- Ponds
- Rivers
- Town Boundary
- Apple Orchard
- Garden Nursery
- Cleared Areas or Fields
- Recent Liquidation Harvesting (1994)
- 2001 Tree Growth Program

Sweden Publicly Owned Bridges

Shape	ID	Name	Owner	Maintainer
Point	6104	Duck Pond Brook	MDOT	MDOT
Point	6105	Black Pond Brook	MDOT	MDOT
Point	733	North Bridgton R	Town	Town
Point	732	Trull Brook Rd	Town	Town

Sweden Transportation

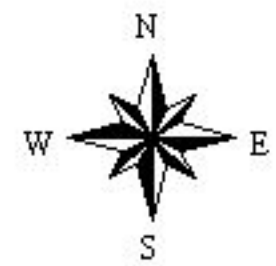
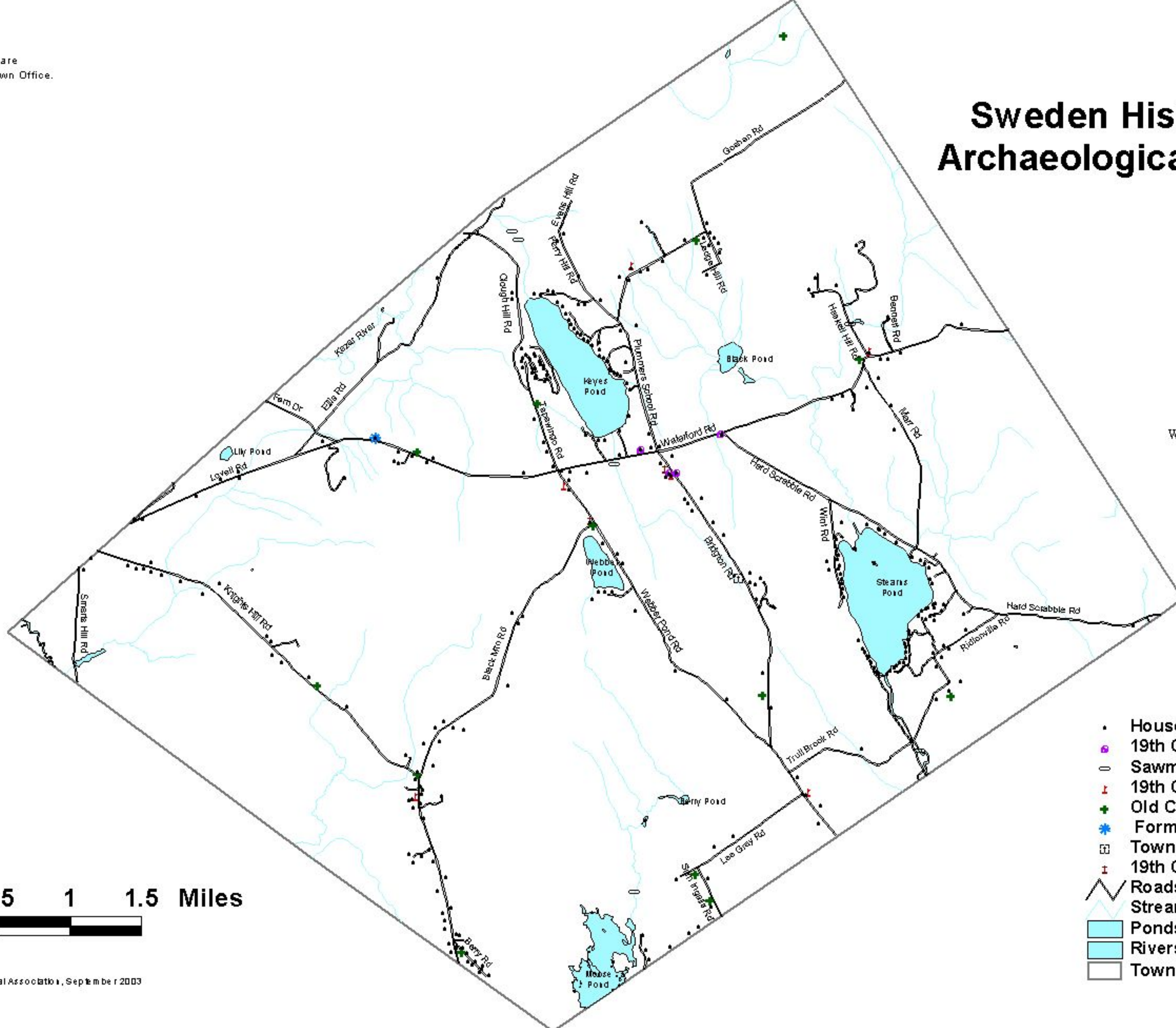
Boundaries and locations are approximate. Verify at Town Office.



- Houses
- Bridges
- Roads
- Recreational Trails
- Streams
- Ponds
- Rivers
- Town Boundary

Boundaries and locations are approximate. Verify at Town Office.

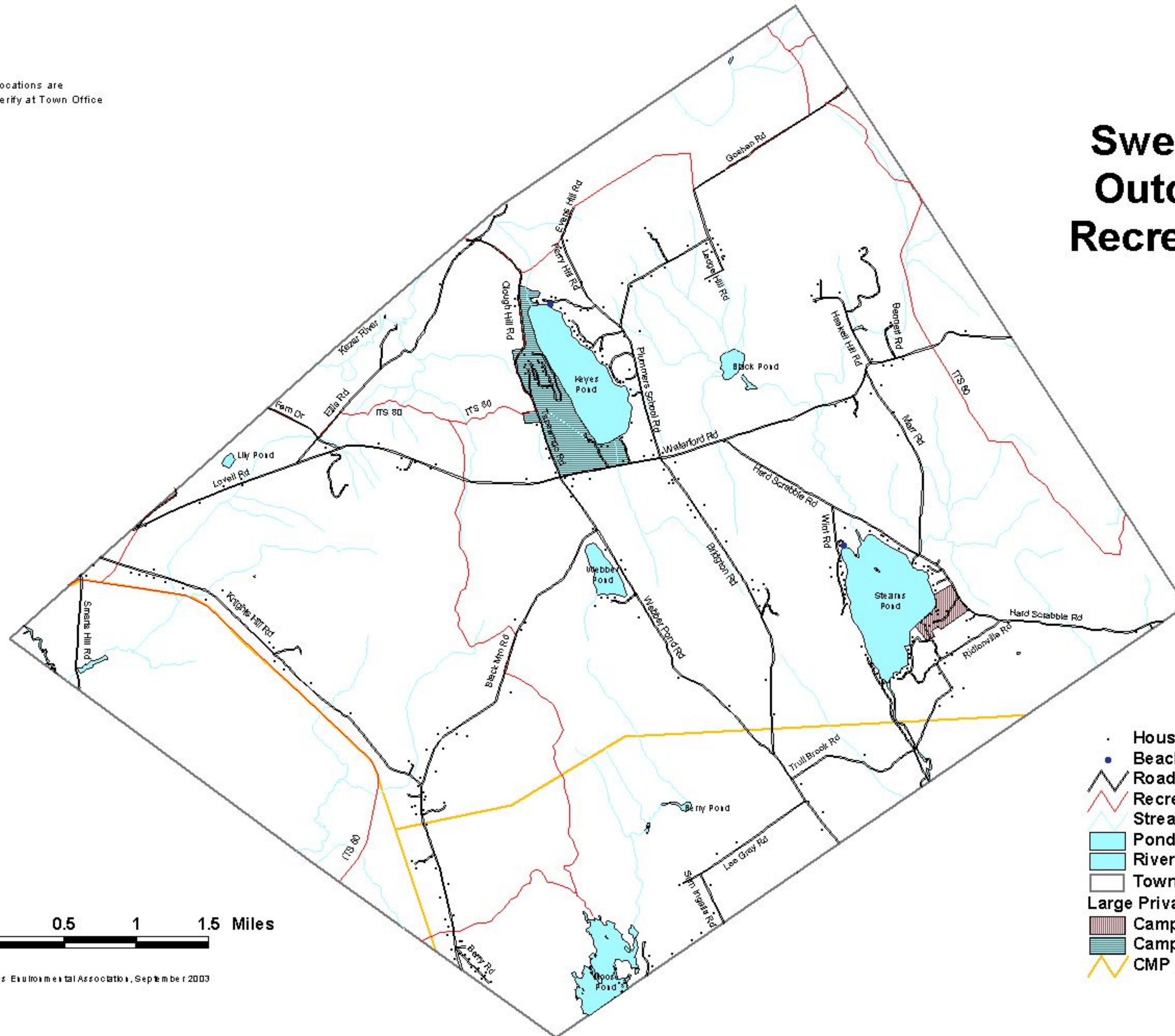
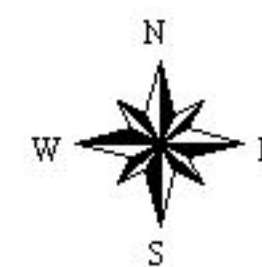
Sweden Historical and Archaeological Resources



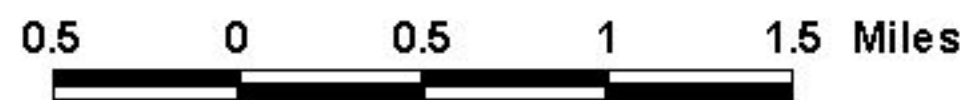
- Houses
- ◻ 19th Century Town Building
- Sawmill Ruins
- ⌚ 19th Century School House
- ✚ Old Cemetery
- ★ Former 19th Century Post Office
- ⊠ Town founder Col. Never's Tomb
- ⌚ 19th Century Church
- Roads
- Streams
- ▭ Ponds
- ▭ Rivers
- ▭ Town Boundary

Boundaries and locations are approximate. Verify at Town Office

Sweden Outdoor Recreation



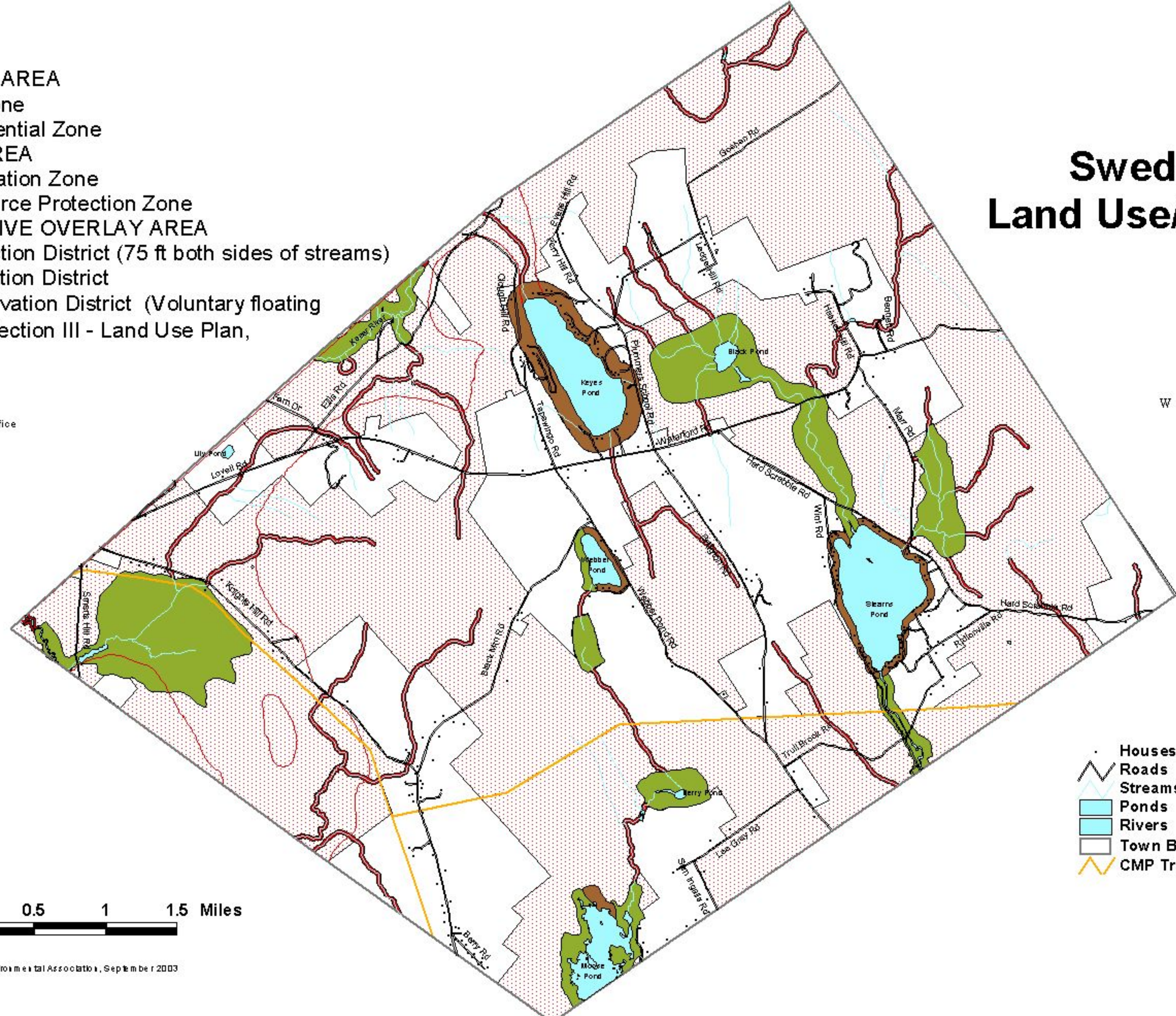
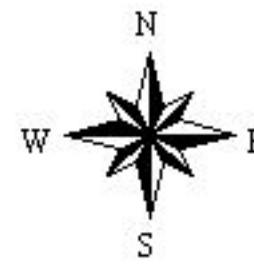
- Houses
- Beaches and Boat Launches
- Roads
- Recreational Trails
- Streams
- Ponds
- Rivers
- Town Boundary
- Large Private Summer Camps
- Camp Encore Coda
- Camp Tapawingo
- CMP Transmission Line



Sweden Land Use/Zoning

- GROWTH AREA**
- Residential Zone
- Limited Residential Zone
- RURAL AREA**
- ▨ Rural Preservation Zone
- Natural Resource Protection Zone
- PROTECTIVE OVERLAY AREA**
- Stream Protection District (75 ft both sides of streams)
- Aquifer Protection District
- Forest Conservation District (Voluntary floating district; Ref. Section III - Land Use Plan, and Map A3)

Boundaries and locations are approximate. Verify at Town Office



- Houses
- Roads
- Streams
- Ponds
- Rivers
- Town Boundary
- CMP Transmission Line

